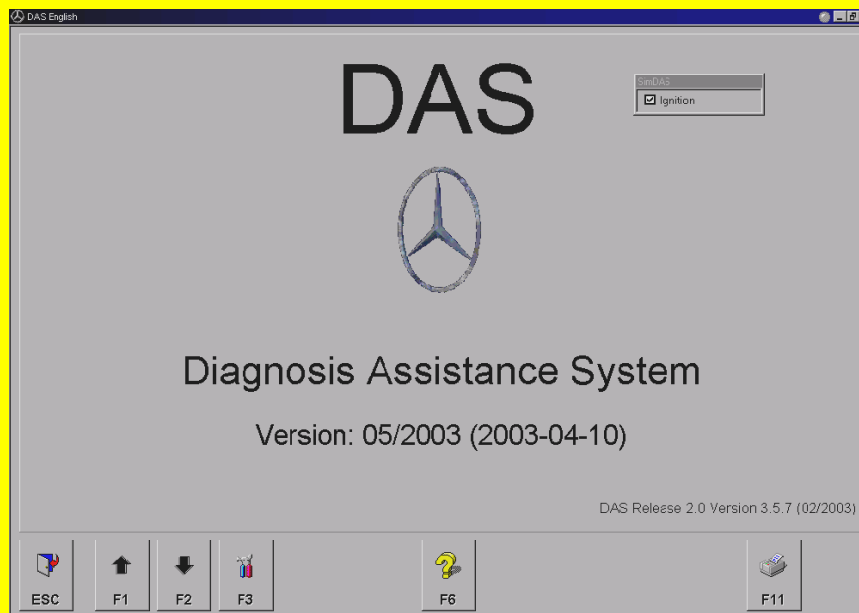


Tips and Tricks

GSP/TCT, GSP/TDE, GSP/TDS

DAS simulation



The DAS simulation mode allows you to access control unit-specific data without actually communicating with a vehicle or a control unit. When required by the test program, the ignition can be switched on and off in a separate window.

Area of application

If a customer requests investigation of an operational problem or fault, the DAS simulation allows the diagnostic functions of a control unit to be displayed even without the vehicle being present. This mode also allows special customer-requested settings to be made (control unit adaptation and/or parameterisation).

Information that can be displayed in the DAS simulation

- All actual values with their specified values
- Explanations of actual values
- A table of comparisons showing the DAS actual values vs. the values at the instrument cluster (commercial vehicles)
- Individual actual values (for commercial vehicles and, to some extent, for passenger vehicles)
- A complete list of fault codes
- A complete list of the guided tests
- All possible current faults (commercial vehicles)
- Brief information and help on the current faults (commercial vehicles)
- Parameterisation options with all possible alternatives (commercial vehicles)
- Control unit adaptations with all possible alternative parameters (passenger vehicles)
- Test steps for fault codes and actual values
- Actuations without actually carrying out the actuation
- Functions applicable to all control units



Tips and Tricks

GSP/TCT, GSP/TDE, GSP/TDS

Restrictions

Since the data and values shown for each control unit are stored in a special file, only one control unit variant can be simulated in the DAS.

This means that the following restrictions apply:

- A guided test cannot be simulated (commercial vehicles)
- Parameters can only be displayed; they cannot be changed.
- Stored faults cannot be displayed (commercial vehicles)
- Actuators can only partially be carried out
- Actual values do not change
- Only one control unit variant is displayed
- This system cannot be used on a standard PC

Starting the DAS simulation

