

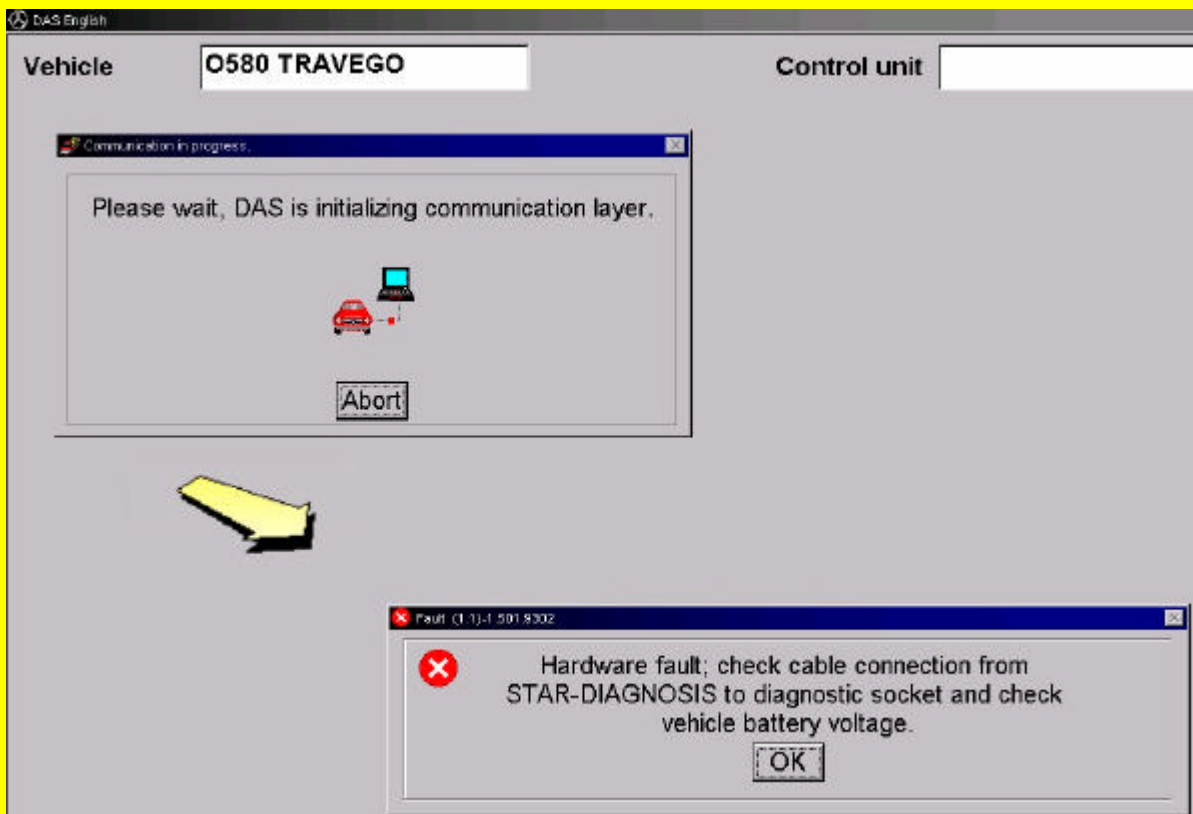


GSP/TCT, /TDE, /TDS

Description of DMI test program

DMI self diagnosis

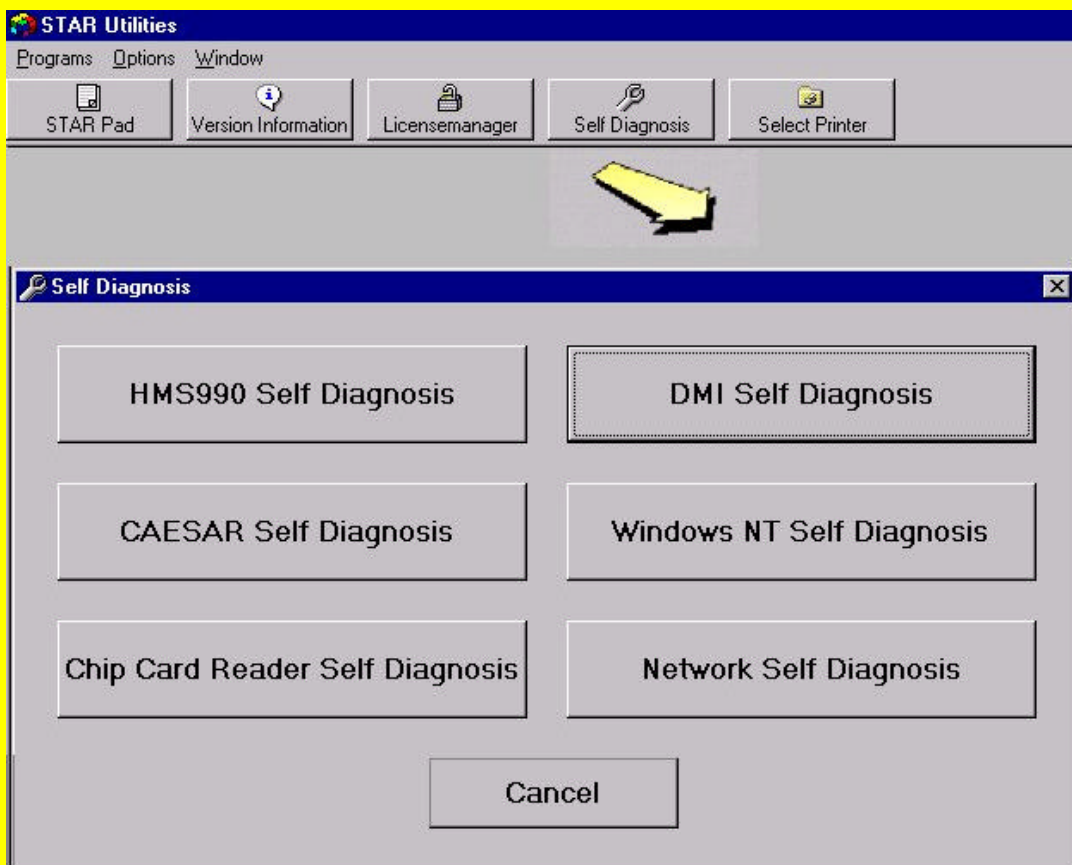
This test should be performed if the following error message is displayed:





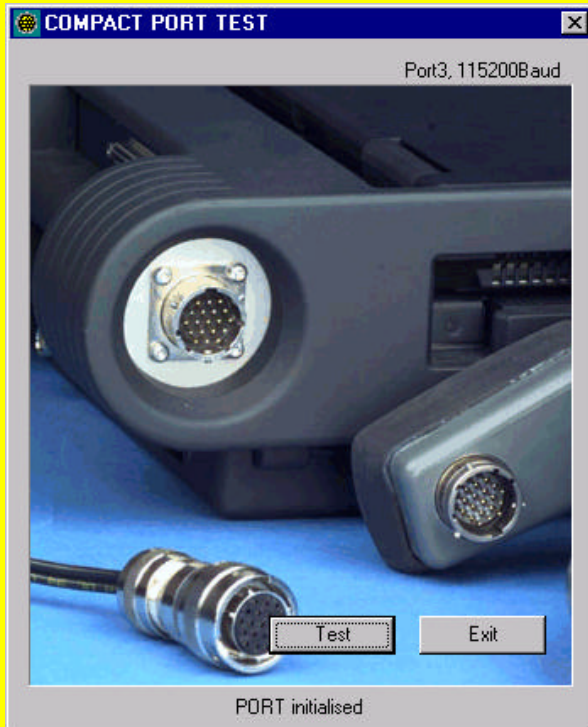
In STAR UTILITIES, the "DMI Self Diagnosis" button in the self diagnosis window is activated. DMI stands for "Diagnosis Multiplexer Interface".

The COMPACT PORT TEST program is started when this button is selected. Before starting this program, the 12/24 V on-board power cable must be connected to the serial port and supplied with voltage via the cigarette lighter jack.





GSP/TCT, /TDE, /TDS



basic and Compact I: Port 3

Compact II: Port 6

Start screen for

Basic

Compact I

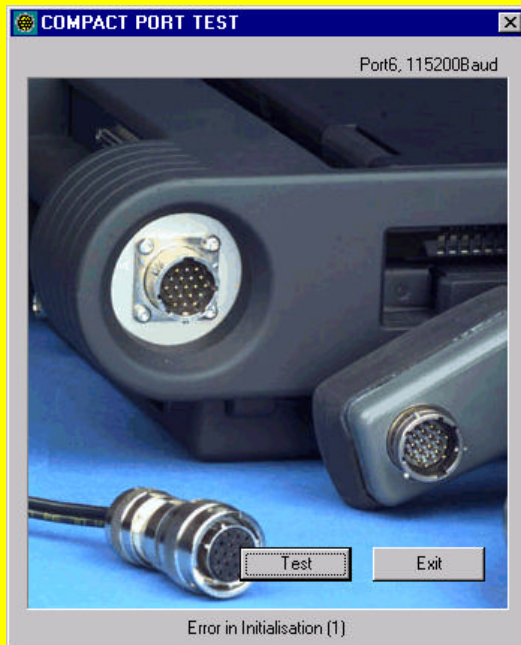
Compact II

Note: Only when there is voltage at the plug!



GSP/TCT, /TDE, /TDS

If the on-board power cable is not connected to the device or the source of voltage, the following message appears:



basic und Compact I: Port 3

Compact II: Port 6

“Error in Initialisation (1)” error message means that: the shell port is defective

Note:

Check if there is voltage at the plug.

→ Connect voltage and click [Test] again.

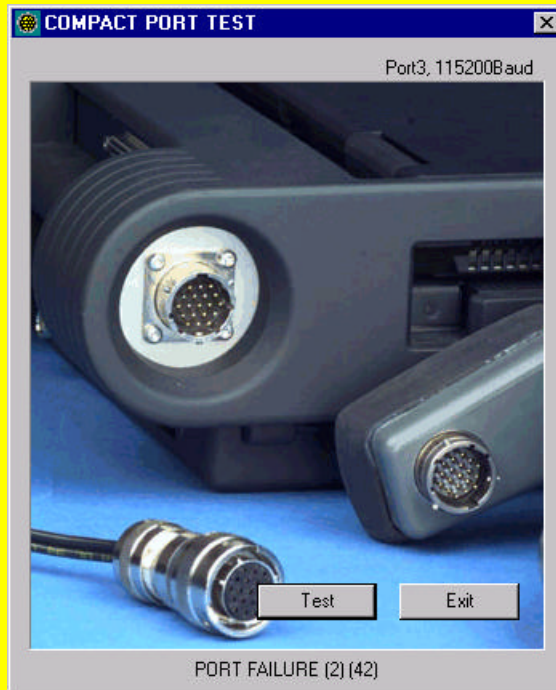
Once the cable is properly connected and the ports are OK, the following message appears:

COMPACT PORT TEST

COM PORT OK



GSP/TCT, /TDE, /TDS



basic und Compact I: Port 3
Compact II: Port 6

“PORT FAILURE (2)” error message means that: the shell port is defective

Note:

Check if there is voltage at the plug.
→ Connect voltage and click [Test] again.