



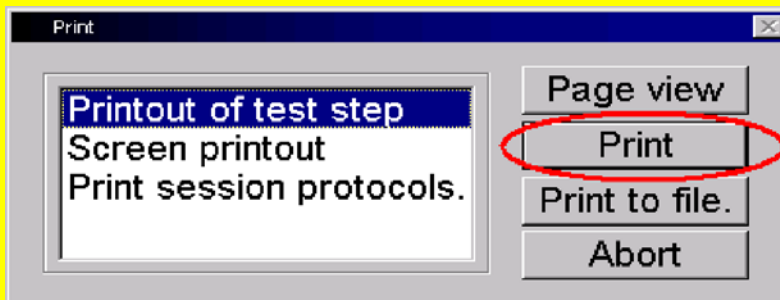
Tips and Tricks

GSP/TCT, GSP/TDE, GSP/TDS

Print Function

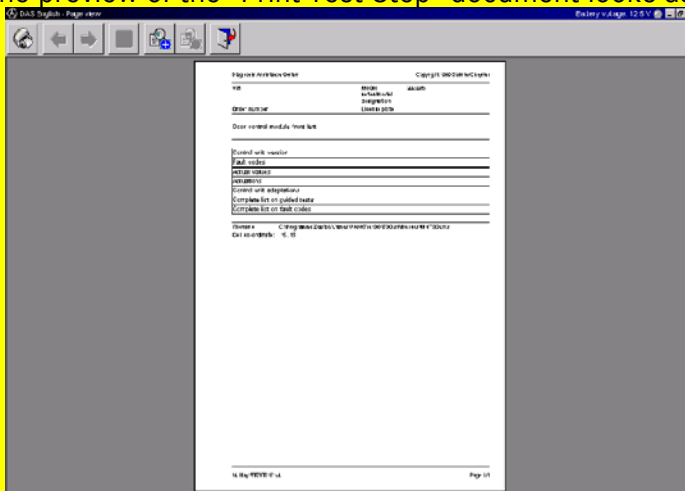


To start the print function, press the **F11** key. A dialog box is displayed containing the following options:

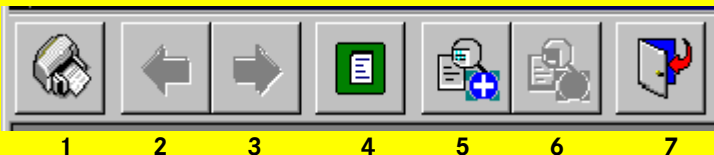


Print Preview

The "Print Preview" menu item allows you to check the layout of the document before printing it out. The preview of the "Print Test Step" document looks as shown below.



The functions of the command buttons in the "Print Preview":



1. Print
2. Back one page
3. Forward one page
4. Switch between one-page view and two-page view
5. Zoom in on page section
6. Zoom out from page section
7. Close "Print Preview"

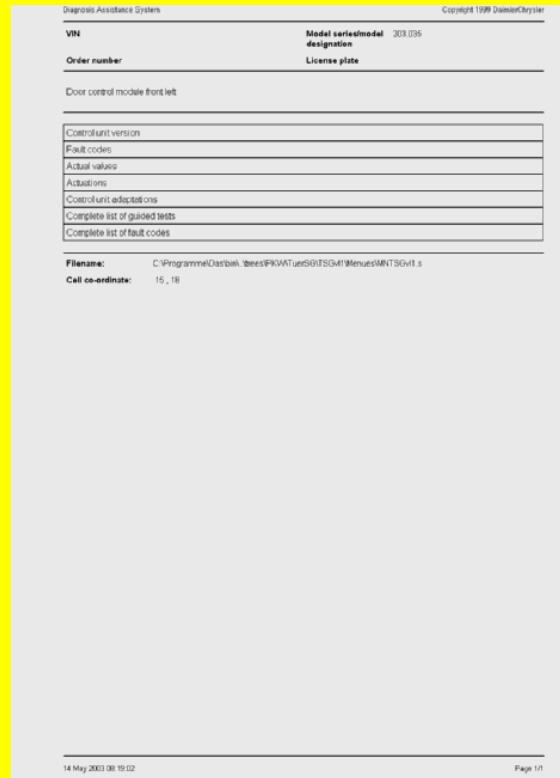
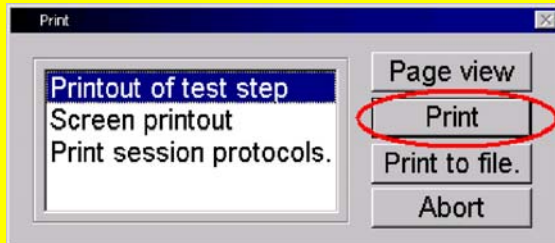


Tips and Tricks

GSP/TCT, GSP/TDE, GSP/TDS

Print test step

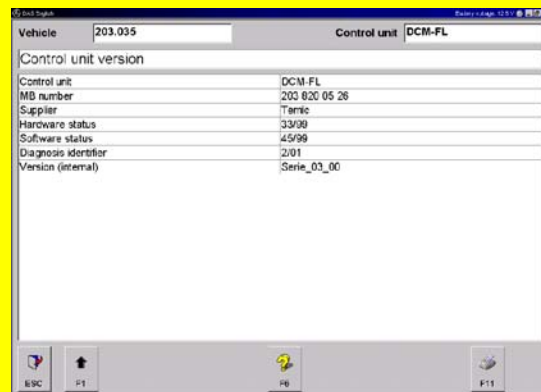
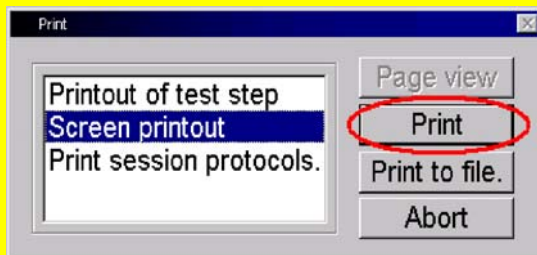
If "Print Test Step" is selected and then "Print" is clicked on, the following printout from, for example, the identification block for the TSG-VL BR203 control unit, is made.



Note: If a test step consists of more than one page, then all the pages are printed out.

Print Screen

If "Print screen" is selected and then "Print" is clicked on, the following printout from, for example, the identification block for the TSG-VL BR203 control unit, is made.



Note: If you select "Print Screen", then the "Print Preview" function is no longer available. Only the content currently visible on the monitor screen is printed out.

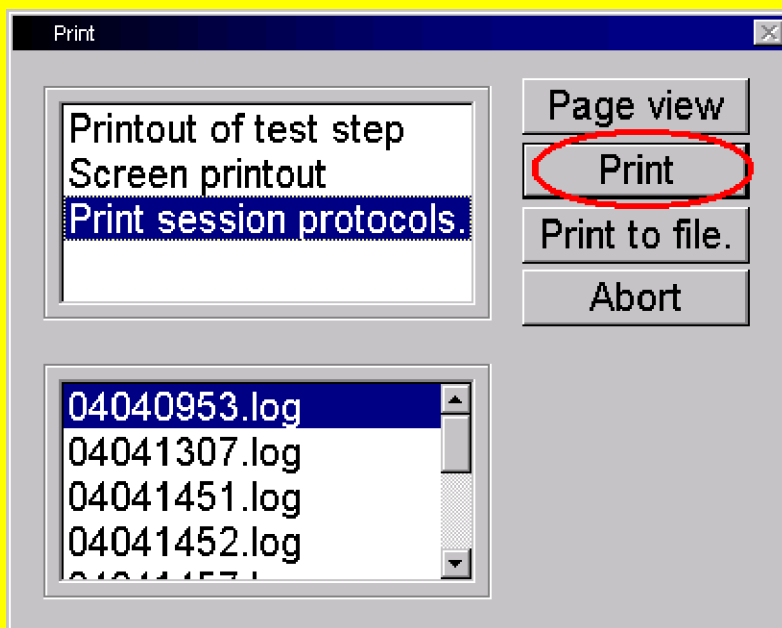


Tips and Tricks

GSP/TCT, GSP/TDE, GSP/TDS

Print Session Log

To document the entire DAS session in a printout, select the option "Print Session Log". In this case, you have the option of also printing out "log files" from previous DAS sessions (see illustration). This option will normally not be required in most work sessions. It is primarily intended to help with troubleshooting and is best used in consultation with the User Help Desk (UHD).



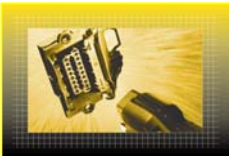


Tips and Tricks

GSP/TCT, GSP/TDE, GSP/TDS

An example of a DAS session log is shown below. Depending on the length of the session, a log may consist of many pages.

<pre>Diagnostic Assistance System Copyright 1999 DaimlerChrysler <?xml version="1.0" encoding="ISO-8859-1"?> <!DOCTYPE StarFeedback SYSTEM "back0350.dtd" [<!ENTITY % CSD SYSTEM "CSD_Backward1.dtd" > %CSD;]> <StarFeedback> <Info> <ProtokollID>UNKNOWN <Language>thesaudt.dbz@Thesaurus_Version 26.03.2003 <CreationDate> <Day>04 <Month>04 <Year>2003 <CreationTime> <Hour>09 <Minute>53 <Second>10 <Context>LIC_PKW@YES <Context>LIC_V-Klasse@YES <Context>LIC_Transporter@YES <Context>LIC_LKW@YES <Context>LIC_BUS@YES <Context>LIC_Unimog@YES <Context>LIC_S-Klasse@YES <Context>LIC_E-Klasse@YES <Context>LIC_C-Klasse@YES <Context>LIC_A-Klasse@YES <Context>LIC_M-Klasse@YES <Context>LIC_Roadster@YES <Context>LIC_Gelaendewagen@YES <Context>LIC_AMG@YES <Context>LIC_V-Klasse 1@YES <Context>LIC_EOBD@YES <Context>LIC_OBD@YES <Context>LIC_alle@YES <Context>LIC_LK/SK@YES <Context>LIC_schwere Klasse@YES <Context>LIC_mittlere Klasse@YES <Context>LIC_Leichte Klasse@YES <Context>LIC_MB_BUS@YES <Context>LIC_Setra_BUS@NO <Context>LIC_Weitere Busse@NO <Context>LIC_Mexico@NO <Context>LIC_Arnfahrerhersteller@NO <Context>LIC_Industriemotoren@YES <Context>LIC_Grosskunden@NO</pre>	<pre>Diagnostic Assistance System Copyright 1999 DaimlerChrysler <Context>LIC_USA@NO <Context>LIC_Hauptgruppe@YES <Context>LIC_RoW@NO <Context>LIC_MR-Download@NO <Context>LIC_BUSKD@NO <Context>LIC_BUSABH@NO <Context>LIC_BUSEOL@NO <Context>LIC_BUSDOWNLOAD@NO <Context>LIC_BUSVoll Diagnose@NO <Context>LIC_STLSTINInfo@YES <Context>LIC_Freie_Werkstaetten@NO <Context>LIC_Pilotprojekt@NO <Context>LIC_Entwicklungsdaten@NO <Context>LIC_Vorabdaten@NO <Context>LIC_BASIC@NO <Context>LIC_Backwardkette@NO <Context>LIC_Pass_Thru@NO <Context>LIC_ModeOff@NO <DecisionTree> <TreeFile> <Path>C:\Programme\Das\bin*.trees <Filename>first.s <Cell> <CellHeader> <CellType>Start <CellID>10 <CellContent> <ScreenType>Welcome Screen <OpenDlg> <DlgType>DLG_LIST <DlgId>1 <DlgHeaderText>1 <DlgMainText>2 <DlgListItemText>3 <DlgListItemText>4 <DlgListItemText>5 <ClickDlg> <DlgId>1 <DlgAnswer>CANCEL <DlgListItemText>6 <Button>ESCAPE <OpenDlg> <DlgType>DLG_ESCAPE <DlgId>1 <DlgListItemText>7 <ClickDlg> <DlgId>1</pre>
<p>14 May 2003 08:32:32 Page 1/4</p>	<p>14 May 2003 08:32:32 Page 2/4</p>

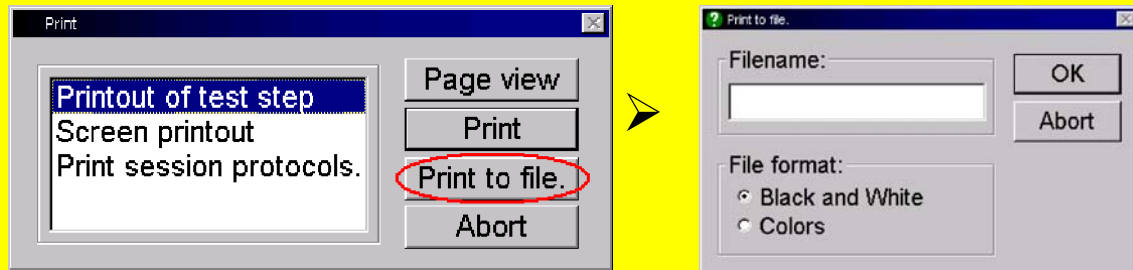


Tips and Tricks

GSP/TCT, GSP/TDE, GSP/TDS

Print to File

This option allows you to print the data to a file that can be printed out elsewhere at a later time.

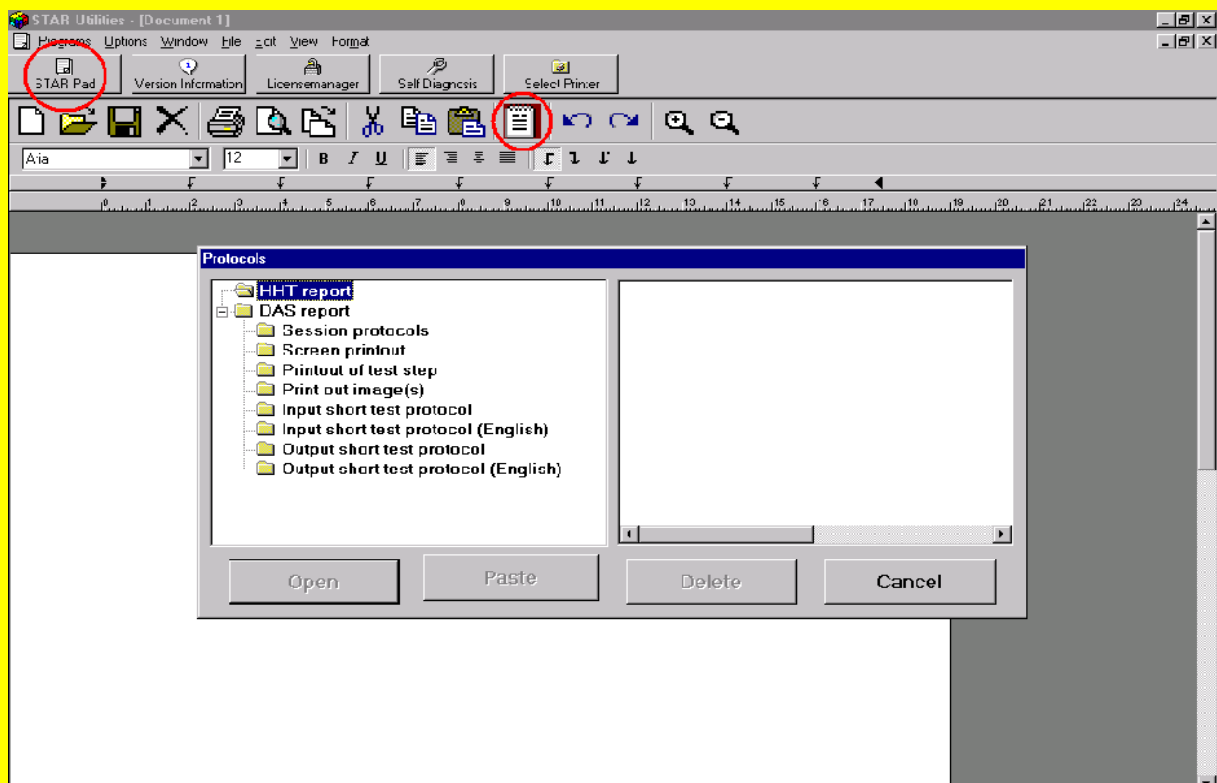



You can enter any file name that you deem appropriate. After entering the name and making your selection, confirm with "OK".

After this, the file can be accessed in Star Utilities. To do this, click the "Star Utilities" button.



After the program has started, select the "STAR Pad" application.



In the screen displayed, click the  button. The dialog box shown is displayed. In the "Log" selection menu, the log files are stored by type in folders, from which they can be selected as required.

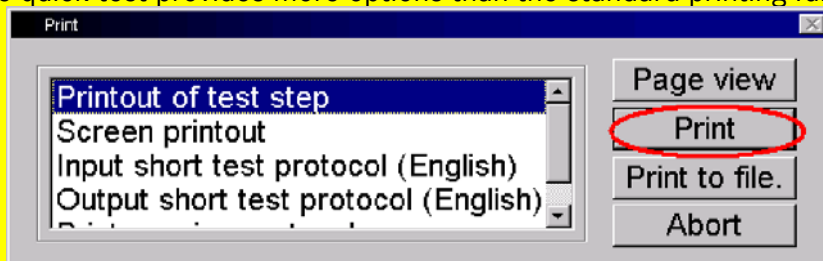


Tips and Tricks

GSP/TCT, GSP/TDE, GSP/TDS

Print Quick Test Log

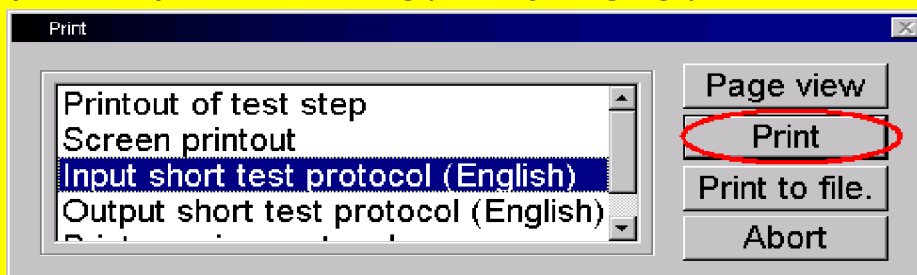
The quick test provides more options than the standard printing function:



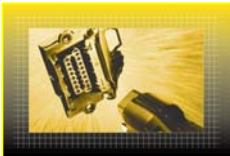
In this case, the "Print Test Step" command generates the quick test printout shown below in its entirety. In contrast, the "Print Screen" command only prints out a "screenshot" of what is currently displayed on the screen.

VIN		Model series/model designation	211.070
Order number		License plate	
ECU		MB number	Result:
Specified-actual configuration of interior CAN bus			- ✓ -
ETC - Electronic transmission control		0305453032	- F -
DTR - Distronic		0255458432	- F -
ME2-SFI - Motor electronics 2.8		1131530479	- F -
SBC - Sensotronic Brake Control		0235450031	- F -
ESP - Electronic stability program		0000000000	- F -
ESM - Electronic selector module		2035450632	- F -
AIRmatic		*	- F -
CGW - Central gateway		2115403145	- F -
TPC - Tire pressure monitor		*	- F -
EIS - Electronic ignition switch		2115450108	- F -
AB - Airbag		0018208028	- F -
BCM - Battery control module		*	- F -
Dr-side SAM - Driver signal acquisition and actuation module		A2115453101	- F -

Input or Output Quick Test Log (Country Language)



This print mode prints out all fault codes stored in the respective control units in the language selected (here in German). The information in this type of printout will be needed when contacting the Star Diagnosis User Help Desk (UHD).



Tips and Tricks

GSP/TCT, GSP/TDE, GSP/TDS

Diagnosis Assistance System Copyright 1999 DaimlerChrysler
 WDBUF70J83A191701

Input short test protocol

Model series/Model designation	211.070	Workshop ID	
VIN	WDBUF70J83A191701	Steering	LEFT
Total distance driven	12 km	Version	8.5.7/05/2003 (2003-04-10)
Battery voltage	12.50 V		

Specified-actual configuration of interior CAN bus

MB object number for hardware	
Result:	- ✓ -
Pin number:	0
Diagnosis version:	
Hardware version	
Software version	

ETC - Electronic transmission control

MB object number for hardware	0305453032
Result:	- F -
Pin number:	11
Diagnosis version:	2F1
Hardware version	
Software version	

Code	Text	Status
P2207	The value of component Y3/6n3 (speed sensor 3) is implausible.	CURRENT
P2100	Component Y3/6y3 (1-2 and 4-5 shift solenoid valve) is faulty.	CURRENT
P2102	Component Y3/6y5 (2-3 shift solenoid valve) is faulty.	CURRENT
P2104	Component Y3/6y4 (3-4 shift solenoid valve) is faulty.	CURRENT
P2106	Component Y3/6y6 (Torque converter lockup PWM solenoid valve) is faulty.	CURRENT
P2107	Component Y3/6y1 (Modulating pressure control solenoid valve) is faulty.	CURRENT

The "Input Quick Test Log" is the log of the first quick tests performed during this diagnostic session (since vehicle selection). The "Output Quick Test Log" is the log of the last quick tests performed in the session. To switch between these two quick tests, press F7.

Input or Output Quick Test Log (English)

This option allows you to print out the same information as described under "Input or Output Quick Test Log (Country Language)". In this case, however, all texts are printed in English. This option is intended to minimise language-based communication problems and possible misunderstandings.