



Tips and Tricks

GSP/TCT, GSP/TDE, GSP/TDS

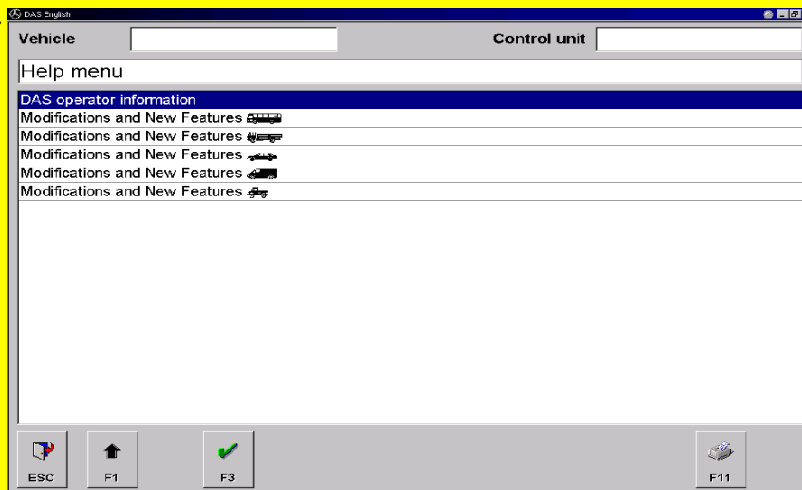
Using the Help functions and entering the password



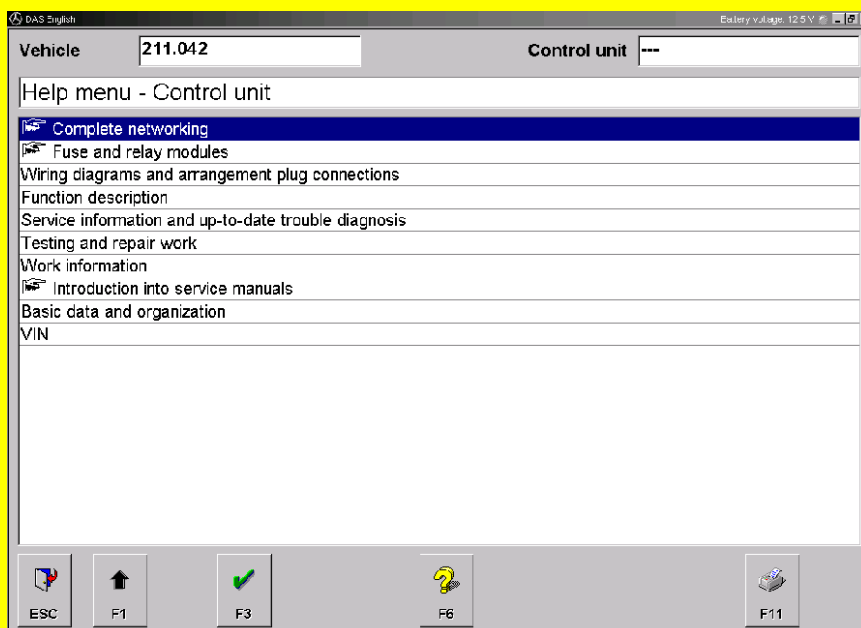
Help key

The help provided in DAS is always related to the current work step. This means that the Help options offered may vary, depending on what is currently displayed on the screen.

Before a model series is selected, the Help function in the current DAS version relates to "Changes and new features" and the "DAS operating tips (DAS key assignments + function key assignments)".



After a model series is selected, the Help function then relates to aspects of the currently selected vehicle, such as wiring diagrams, connector pin assignments, functional descriptions and abbreviations.

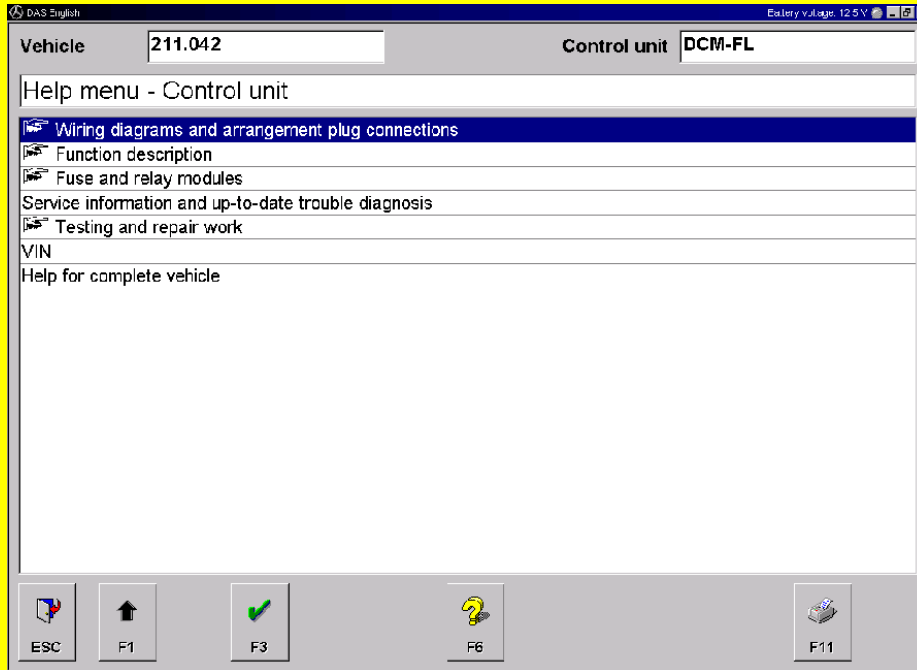




Tips and Tricks

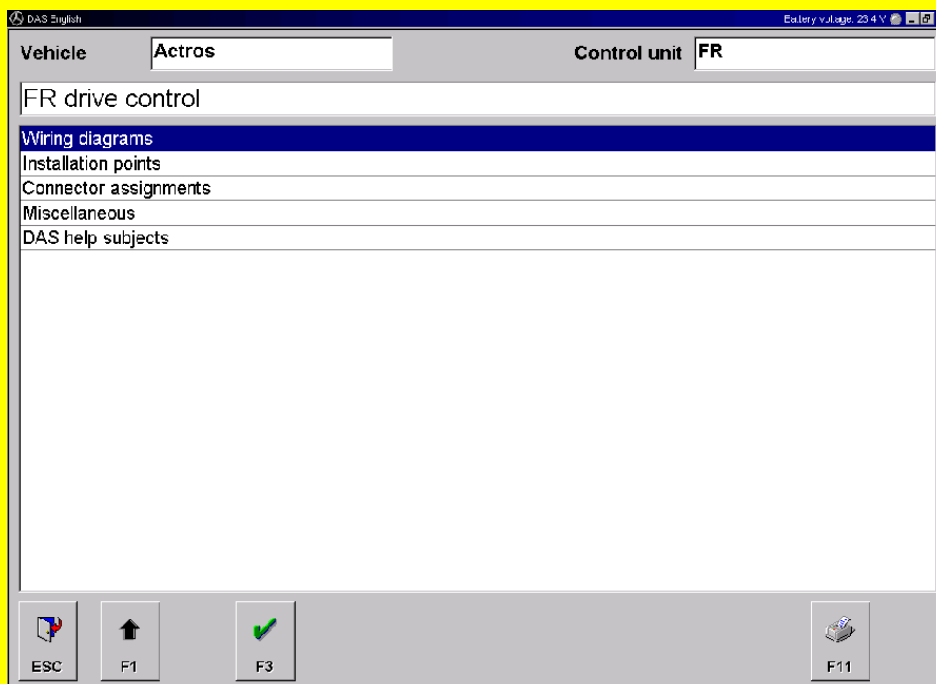
GSP/TCT, GSP/TDE, GSP/TDS

After a system is selected, the Help function relates to that particular system, such as the location of its components, functional description of its control unit, etc.



If you press F6 a second time while in the Help menu for model series and control units, the "Changes and new features" and "DAS operating tips" help menus are displayed. This "Help on Help" is only available for passenger cars.

For commercial vehicles and buses, the system help is called "Help applicable to all control units". This help system is illustrated below:




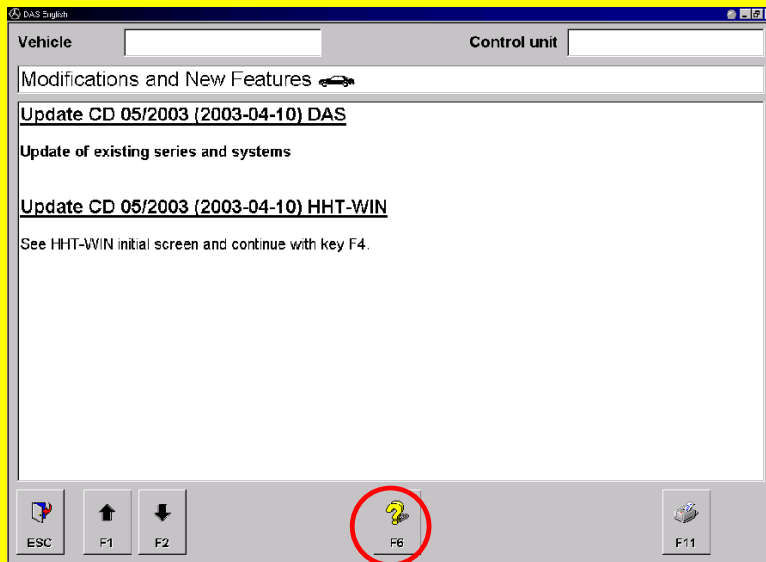


Tips and Tricks

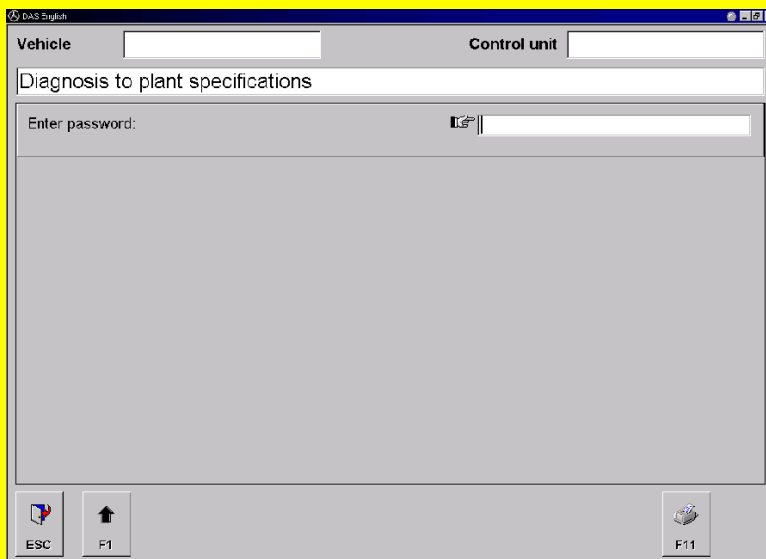
GSP/TCT, GSP/TDE, GSP/TDS

Entering the password for "Diagnosis based on factory data" for passenger vehicles

While at the initial system screen (Fig. 1), select the "Changes and new features " menu item. After this new screen is displayed, press F6.



In the screen that is then displayed, you can now enter the password for "Diagnosis based on factory data".



Note: The "Diagnosis based on factory data" function can only be carried out in consultation with the User Help Desk (UHD) and the DaimlerChrysler control unit manager, who will provide the required password.