



Tips and Tricks

GSP/TCT, GSP/TDE, GSP/TDS

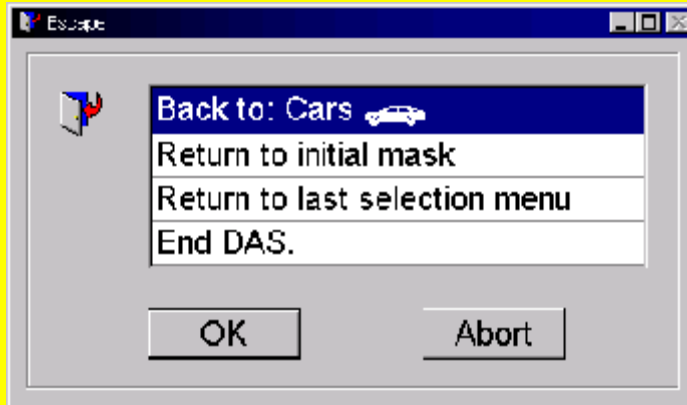
Escape Menu (ESC key)

The examples shown below are based on a scenario for passenger cars. The same functions are available in the DAS for other vehicle categories. In some cases, the texts will specifically refer to a given category.




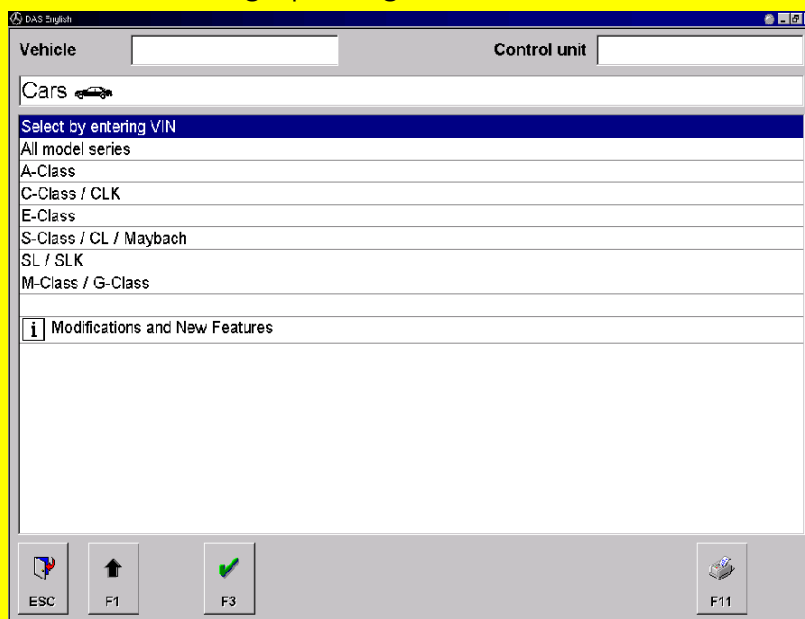
ESC key

In the DAS, the ESC key allows you to return to various locations in the interface. After you press the ESC key, the following menu selection box is an example of what may be displayed.



ESC menu selection box

If you select the menu item "Back to: Passenger Vehicles ", you will return directly to the screen for selecting a passenger vehicle model series.



Selecting a passenger vehicle model series

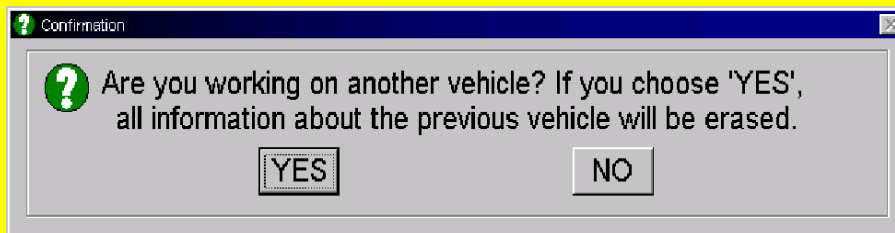


Tips and Tricks

GSP/TCT, GSP/TDE, GSP/TDS

If you now start another diagnosis session, the diagnosis multiplexer will not have to be reinitialised. This will save a considerable amount of time between selecting the model series and establishing communication with the control unit.

If, when selecting a model series, you again select the same model series and model, the following prompt question is displayed:



Question prompt box: model series selection

If you respond with "YES", then all the quick test results from the previous diagnosis session are deleted from the DAS. If you respond with "NO", the DAS assumes that you are still working on the same vehicle. All quick test results obtained during the previous diagnosis session remain intact and available for further use.